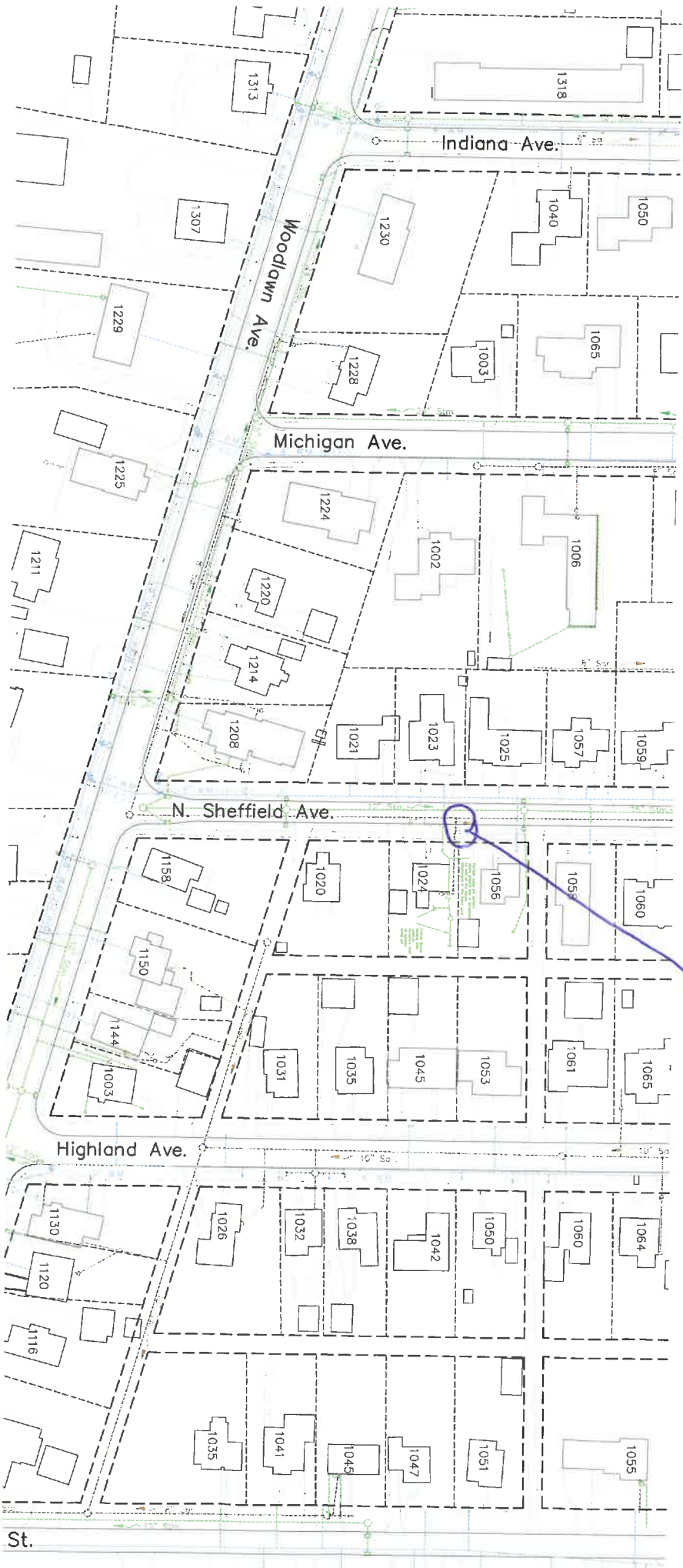


August 2021
RE, RN, CE



GIS BY THE 9-27-2021
NEEDS ADDED TO SYSTEM

MANHOLE NOT IN SYSTEM
274 FEET NORTH OF M-H # OR 1150
Flow line 9 feet
outlet and inlet 8" plastic
to the north and south

Manhole is Between
1024 and 1056 Sheffield Ave